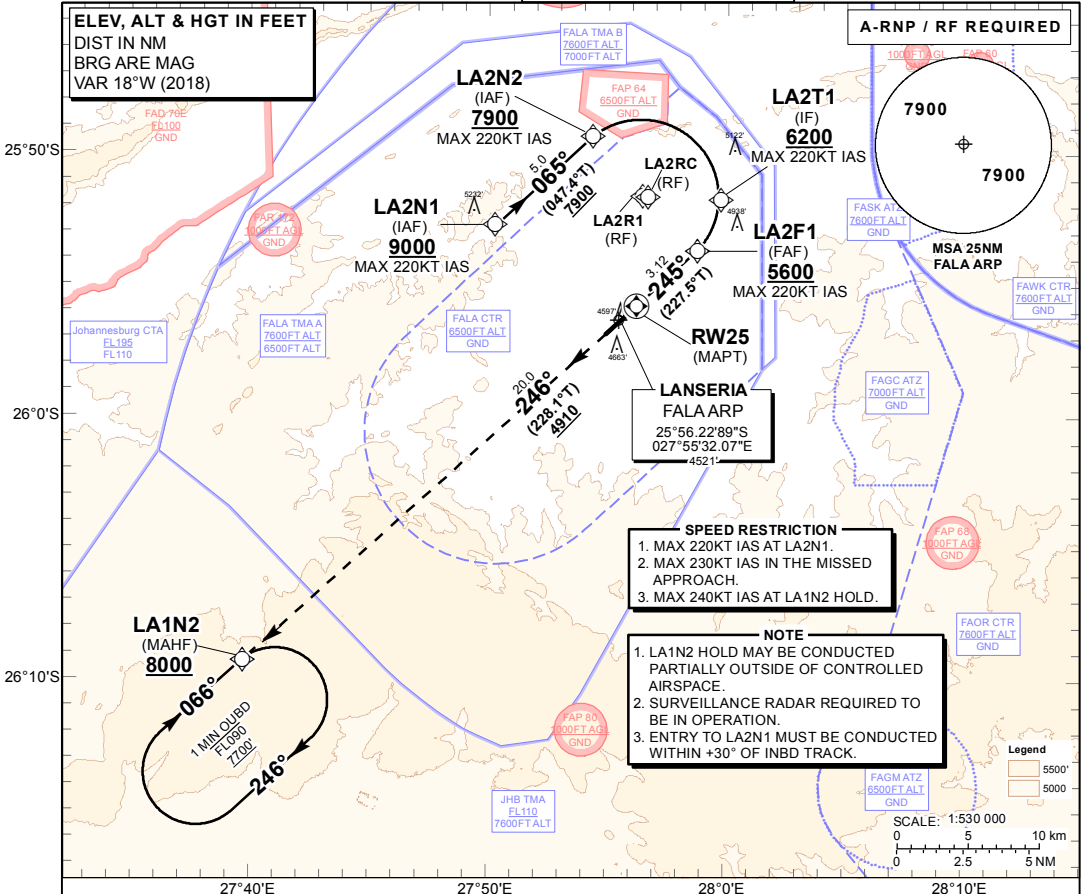


INSTRUMENT APPROACH CHART - ICAO **AERODROME ELEV 4521'**
HEIGHTS RELATED TO THR RWY 25 - ELEV 4394'

FALA APN: 122.85 SMC: 121.65 TWR: 124.00 ATIS: 127.65
 JHB APP S: 124.50 E: 124.50 W: 123.70 SMC: 121.90

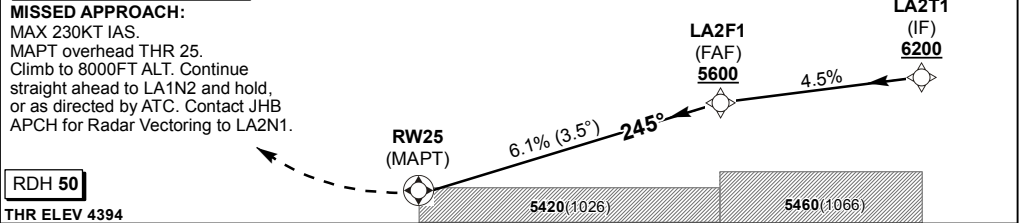
LANSERIA INTL RNAV (RNP) RWY 25
CAT A - D



	27°40'E	27°50'E	28°0'E	28°10'E
Distance from THR 25	3.12	3	2	1
ADVISORY ALT(HGT)	5600 (1206)	5560 (1166)	5186 (792)	4815 (421)

TRANSITION ALT 8000
TRANSITION LEVEL ATC

INA ALT 9000 via RADAR VECTURING



		A	B	C	D	GS	KT	80	100	120	140	160		
Straight-in Approach	LNAV	2.5%	5160 (766)	5160 (766)	5160 (766)	5160 (766)	FAF to THR	M:S	2:20	1:52	1:33	1:20	1:10	
	LNAV/ONLY	3.0%	4940 (546)	4940 (546)	4940 (546)	4940 (546)		Rate of descent	FPM	494	617	741	864	988
	LNAV/VNAV	2.5%	4990 (596)	4990 (596)	4990 (596)	4990 (596)		NOTE:						
	VNAV	2.7%	4830 (436)	4830 (436)	4830 (436)	4830 (436)		1. Do not descend below 6500FT ALT until passing FAP 64. 2. Circling approaches prohibited. 3. No turns prior MAPT. 4. Advice ATC of an intention to divert in the event of a missed approach.						
	RVR	1500m		2000m										
	ALS OUT	1500m		2000m										
	Circling	CIRCLING PROHIBITED												

CHANGE: OCA/H revised and MAPT renamed